



FÉDÉRATION
INTERNATIONALE
DE NATATION



GUIDELINES

FOR THE ORGANIZATION & THE MANAGEMENT OF FINA COMPETITION DURING COVID-19 PANDEMIC

1. INTRODUCTION

FINA acknowledges the extraordinary nature of the COVID-19 pandemic and the ensuing difficulties for the organisation of safe sporting events. In consideration of these extraordinary circumstances, the FINA Bureau issued this document to provide mandatory guidelines for the resumption of competition in light of the current COVID-19 pandemic ("The FINA COVID-19 Guidelines"). The FINA COVID-19 Guidelines supplement existing FINA regulations for each discipline.

The FINA COVID-19 Guidelines set out requirements which must be complied with and practical recommendations which are not mandatory.

The FINA COVID-19 Guidelines will take effect from the day they are approved by the FINA Bureau and will remain in force until they are repealed by the FINA Bureau. With COVID-19 constantly evolving, and with no available vaccine against COVID-19 as of October 2020, this will be a living document and FINA will revise the FINA COVID-19 Guidelines when changes are required. Any amendments shall be published without delay and shall be immediately applicable, unless indicated otherwise. The FINA Bureau delegates its powers to amend the FINA COVID-19 Guidelines to the FINA COVID-19 Task Force.

The FINA COVID-19 Guidelines shall apply to all competitions organized or sanctioned by FINA, and strongly recommended for any Continental or Regional Organization or any Member Federation in which other FINA recognized federations, clubs or individuals participate, as per BL 12 ("FINA Competitions").

The FINA COVID-19 Guidelines are applicable to all persons participating in FINA Competitions (the "Participants"). This includes but is not limited to athletes, athlete's entourage, media, technical partners (e.g timing and scoring staff), FINA Family (referees, judges, FINA Staff, Technical Committee Member or Bureau members), OC staff and volunteers.

Federations should have their own detailed COVID-19 mitigation plans in place, in line with local government guidelines, and remain responsible for implementing necessary measures in regular domestic environment. National Federations are responsible for preparing competition in a safe environment, ensuring they follow national and international guidelines and safety recommendations.

FINA recognizes that government COVID-19 regulations and recommendations vary from country to country. Where these are more rigorous they must supersede The FINA COVID-19 Guidelines.

The aim of The FINA COVID-19 Guidelines is to ensure that all steps are taken to mitigate the risk of infection for those involved in competition, understanding the risk cannot be completely eliminated. All stakeholders participate in competition at their own risk.

The FINA COVID-19 Guidelines provide a minimum standard for the health and safety of all athletes, staff and officials, with latitude for adaptation to individual circumstances.



Consistent with WHO recommendations FINA prioritizes enhanced hygiene and physical distancing, together with a COVID-19 testing programme. This is supported by a zonal approach for competition, mitigating risk for athletes and officials. The FINA COVID-19 Guidelines focus on a positive experience for a television audience, where local regulations do not permit spectators. Where spectators are permitted they must be kept fully separated from all other participants at the venue through a distinct COVID-19 prevention strategy.



2. REQUIREMENTS PRIOR TO ORGANIZING A FINA COMPETITION

2.1 General Requirements

The following requirements must be fulfilled by the Organizing Committee ("OC") prior to the organization of a FINA Competition:

- 1) Provision of a competition Health Plan in compliance with the FINA COVID-19 Guidelines and approved by local Public Health Authorities to the FINA COVID-19 Task Force. Close cooperation between the OC and Local Public Health Authorities is mandatory.
- 2) Each OC will need to appoint an *OC COVID-19 Officer* as defined in Section 5 below and inform the FINA COVID-19 Task Force accordingly.
- 3) Provision of Evidence that the OC and all attendees are in compliance with FINA COVID-19 Guidelines.
- 4) To have an agency responsible for costs of testing and contact tracing.
- 5) To provide written evidence that host federation/organizers have met government/ local authority restrictions for participating delegations to enter and leave the country.

2.2 Financial Management Requirements:

The following elements must have been considered and developed by the OC prior to the organization of a FINA Competition:

- 1) Consider if the event is cost effective and the financial risk of cancellation.
- 2) Consider lower than expected registration/ticket sales to accommodate physical distancing protocol.
- 3) Develop late registration and refund policies and clearly communicate such policies at the time of registration.
- 4) Consider ancillary event order timelines, such as awards, programs, marketing, etc.
- 5) Consider the country's COVID-19 restrictions, requirements, cleaning protocols and financial impact on staffing requirements and volunteer needs.

3. SCIENTIFIC INFORMATION

3.1 Tests for COVID-19

There are two tests, on fresh nasal or throat swabs, currently used to detect the presence of COVID-19 virus.

3.1.1 PCR Test

This test employs a laboratory technique known as polymerase chain reaction from which the test gets its name. It offers a precise, very sensitive measure of viral genetic material even when the virus is dead. It is reported as either positive or negative irrespective of the number of COVID-19 particles present, preferably from a high nasal swab. Results from PCR testing take at least 24 hours to report, however in most jurisdictions it is several days before a result is known.

3.1.2 Antigen Tests

Antigen (Ag) testing detects certain viral proteins present in a nose or throat swab. It offers rapid inexpensive testing conducted on-site with an immediate result. While a positive Ag test indicates contagion there is also the possibility of a false negative result. If an individual is symptomatic with a negative Ag test, the attending physician may order a PCR test.

In the context of the FINA Guidelines, evidence of PCR testing is required prior to the arrival of every member of a team delegation and each official. Upon arrival at the competition venue (hotel) every participant will be required to undergo an Ag test. Only in the presence of negative PCR and Ag test results will an individual be permitted to participate in FINA competition.

Of the seven forms of Ag testing currently available, the FINA COVID Task Force recommends tests that detect high contagion with good sensitivity in patients with a CT value below 30. The CT value or threshold cycle value indicates viral load with a CT value of 30 considered by most authorities to be a significant cut-off for contagion.

Therefore, the following Ag tests (with their sensitivities) are recommended.

Antigen test (fast covid-19 test) which can be used by organization of FINA events.

Not all antigen tests are useful for the purpose FINA wants to use them for (detect contagious athletes and people in their entourage).

Therefore the FINA task force has approved (version October 2020) a few of them and will keep track of new ones available.

APPROVED (Sensitivity at CT values of PCR between 25-33):

BIOSENSOR Ag Test:	71.8%
ABBOTT Ag Test:	65.7%
BIOSYNEX Ag Test:	71.3%
AAZ Ag Test:	73.5%
BD Veritor Ag Test	93.4%
Wesail Ag test	71,1 %

**NOT Approved:**

- NG Biotech
- Coris

More information are available in the section 20 (reference and links)

3.2 The Swimming Pool and Sport Environment

It is recognized that physical distancing (>1.5m) and other preventive measures may not be possible in all circumstances.

Swimming pools are already generally safe from the perspective of viral transmission serious health risks and when hygiene measures are implemented there should be minimal spread of infection.

The virus responsible for COVID-19 has a fragile external lipid membrane, rendering it less stable in the pool environment and more sensitive to oxidants such as chlorine.

According to what is stated by the WHO, conventional methods employing a centralized water treatment system using chlorine filtration and disinfection are deemed capable of inactivating COVID-19. Although the virus has been reported in river water, it has not been detected in drinking water and, based on current evidence, the risk of COVID-19 viral transmission via drinking water is very low. It also reports that, for effective disinfection of the water, there should be a residual concentration of free chlorine of ≥ 0.5 mg / l. As further confirmation, it has long been demonstrated that free chlorine of at least 0.5 mg / l ensures deactivation of SARS-CoV (from the same family as the COVID-19 virus). Therefore water used in swimming pools should be of the same quality as water for human consumption.

These principles are consistent with the opinion of the Centre for Disease Control and Prevention (CDC), the reference point in USA for the application of all measures of disease prevention and control: *"Conventional water treatment methods that use filtration and disinfection, like those in most of the municipal drinking water systems, should remove or inactivate the virus that causes COVID-19"*. There is no evidence of COVID-19 being contracted through drinking water.

Therefore, free chlorine concentrations between 0.8 and 1.5 mg / l as maintained in most swimming pools appear capable of preventing the spread of COVID-19. Furthermore, the evaporation of chlorinated water could also reduce the risk of spreading a virus transmittable by air in the swimming pool environment. The OC shall therefore make sure to keep the free chlorine concentrations between 0.8 and 1.5 mg / l.

3.3 Risk Assessment

The OC and all participants must make themselves familiar with the following WHO publication:

[Key planning recommendations for mass gatherings in the context of the current covid-19 outbreak](#)

The OC must also be aware of the WHO Risk Assessment Guidelines applicable to major events such as World Championships.

4. TRAVEL TO THE COMPETITION

The delegation shall limit the number of support personnel accompanying the athletes.

All travelling participants must ensure strict compliance with all local guidance and regulations while travelling, to mitigate the risk of contracting the virus.

4.1 Pre-competition Testing

Only the participants with evidence of a recent negative COVID-19 PCR test and a recent negative Ag test will be eligible to attend or take part in the relevant competition. This applies to all accredited participants, including athletes, athlete's entourage, media, technical partners (e.g timing and scoring staff) and FINA Family (referees, judges, FINA Staff, Technical Committee Member or Bureau members).

We recommend that each delegation keep a COVID-19 testing logbook for their athletes and officials.

Therefore, these participants to a FINA Competition have to follow the protocol hereunder:

1) Participants will provide to the organizing committee a negative PCR-test, no older than 5 days prior to the beginning of the competition. All costs related to this test are to be borne by the participant and/or their National Federation

2) At arrival, all participants must submit to a rapid Ag test which will be organized by the OC at the hotel participants. All costs related to this test are to be borne by the OC.

➔ Should local authorities require another test for visitors on arrival to that country, then the COVID-19 Officer to be appointed by the Host Federation as per Section 5 shall oversee arrangements with the local health authorities prior to the beginning of competition. It is the responsibility of the OC to liaise with their health authorities to ensure the facility for rapid analysis and reporting. The OC is also responsible for any costs related to this test.

Local Officials, Volunteers, and OC staff shall also provide a negative PCR Test and an Ag Test.

4.2 Athletes who have recovered from COVID-19 prior to the Competition

It is recognized that those recovered from COVID-19 may still be at risk of returning a positive PCR test, despite no contagion risk or symptoms.

To be permitted to take part in subsequent competition any athlete who has recovered from COVID-19 must submit medical documentation to FINA¹ which confirms full recovery from COVID-19. This information will be reviewed confidentially by a delegation of at least two appointed FINA physicians who will decide if the Athlete can participate or not and recommend appropriate steps to be followed. The documentation must include:

- the date of initial diagnosis (the date of first symptoms should be at least 7 days

¹ This information must be provided at least one week before the competition

before the competition with at least one day without any symptoms),

- relevant medical history in English,
- and the results of at least 1 negative COVID-19 test (PCR or antigen) in accordance with the health care regulations of the respective country reported within 14 days of the commencement of the intended competition.

Upon arrival of the competition a new antigen test will be done and must be negative for the Athlete to participate in the Competition.

Besides the contagious risk there are health-risks (cardiopulmonary) at stake for the individual. Although this is not the primary task of the FINA task-force we provide here some general guidelines based on the scientific literature which will be considered by the two FINA physicians prior to taking their decision:

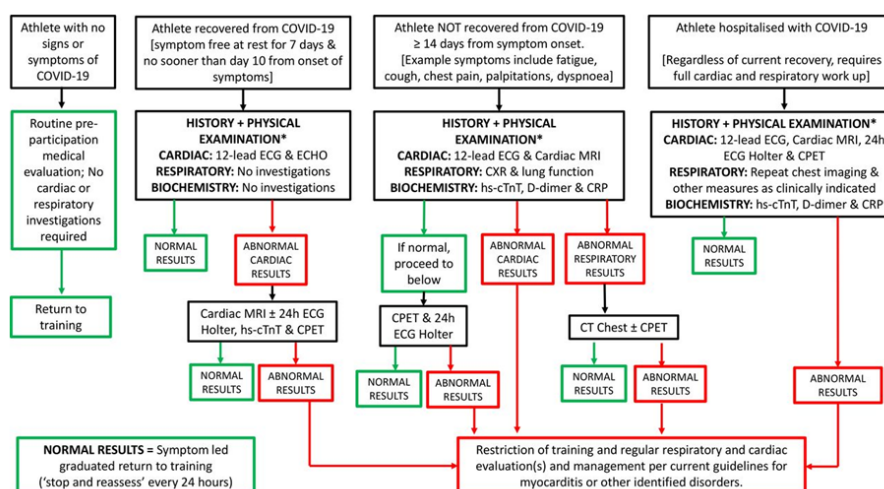
- Athletes with active COVID-19 should cease all sports activities and undergo self-isolation at home for the entire symptomatic period. While COVID-19-specific data are lacking, waiting 7 days after resolution of all symptoms, and a minimum of 10 days after onset of symptoms (besides a negative COVID-19 test as mentioned above) before resuming exercise seems reasonable. After that, gradual resumption of exercise and sports can be considered, based on the severity and duration of symptoms and after stratification if pre-participation screening (PPS) is indicated.

To summarize this, two algorithms have been written. A more stringent (Fig1). and a more flexible (Fig 2.).

→ A larger version of the documents can also be found at the end of these guidelines

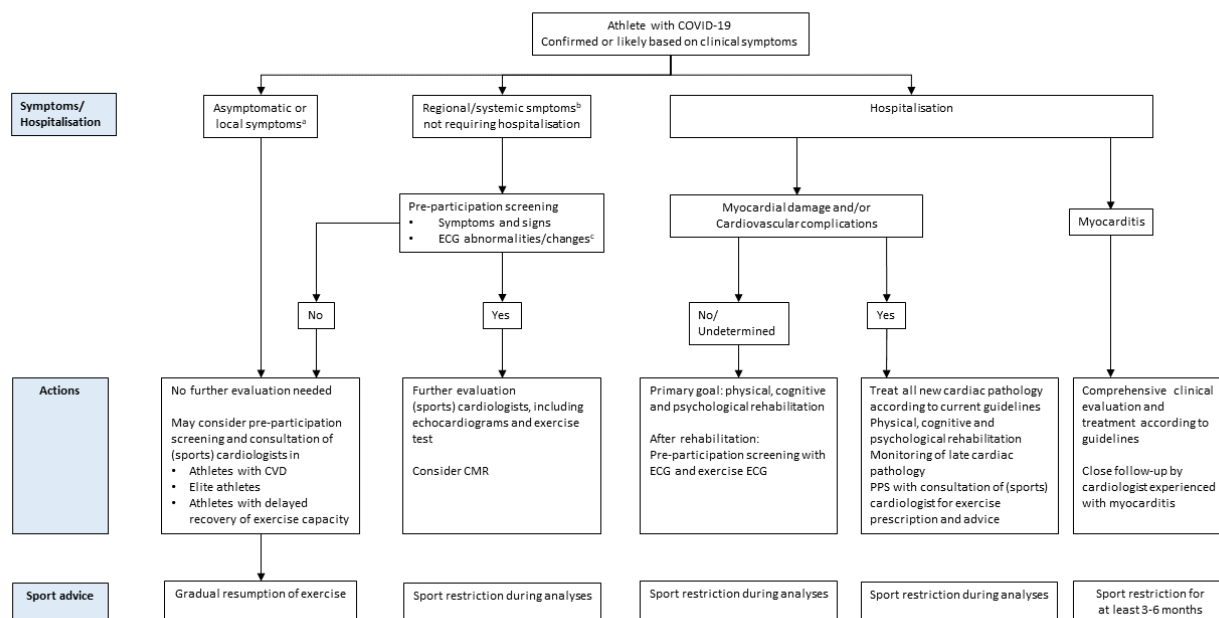
Fig 1. RTP pathway in those elite athletes confirmed (or suspected) COVID-19 positive. Wilson et al *Br J Sports Med.* 2020 Oct; 54(19): 1157–1161.

RTP pathway in those elite athletes confirmed (or suspected) COVID-19 positive. *History and physical examination should also consider other organ systems where COVID-19 can have pathological consequences such as neurological, gastrointestinal and dermatological.



Mathew G Wilson et al. *Br J Sports Med* 2020;54:1157-1161

Fig 2. Flowchart for stratification of athletes after COVID-19 for pre-participation screening, diagnostic and therapeutic considerations. Verwoert et al Neth Heart J. 2020 Jul; 28(7-8): 391–395.)



NB: The above protocols shall also apply to any accredited participant.

5. LIAISONS

5.1 HOST FEDERATION OC COVID-19 OFFICER

Each OC will appoint an *OC COVID-19 Officer* who is a physician who has awareness of the FINA COVID-19 Guidelines and is up to date with the latest evidence on COVID-19 disease. He/she must be distinct from the Competition Chief Medical Officer. The Guidelines of the competition and the competition Health Plan must contain *OC COVID Officer* contact details.

The OC COVID-19 Officer must liaise with local Public Health Authorities in the planning for the competition, and during the competition.

This appointee will ensure that pre-competition planning, competition protocols and departure/ follow up procedures are consistent with the FINA COVID-19 Guidelines and compliant with local health standards.

The FINA contact person pre-competition, and on-site for COVID-19 matters will be the FINA Medical & Doping Control Delegate whose duty will be to liaise with the OC COVID-19 Officer, ensuring that all COVID-related issues outlined in these Guidelines are met.

The FINA Medical & Doping Control Delegate and OC COVID-19 Officer should meet daily during the event to update the status of all athletes and officials and check on the progress and management of any active cases. A current update should be circulated daily to all team delegations and officials.

5.2 COVID-19 MEDICAL COORDINATOR (CMC)

When feasible, all teams/delegations should appoint an English-speaking COVID-19 Medical Coordinator who will be responsible for ensuring all mitigation measures are followed by the athletes and officials of the delegations.

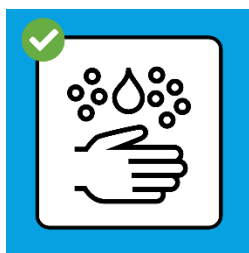
The CMC would be the liaison with the OC COVID-19 Officer and FINA Medical and Doping Control Delegate.

The CMC should work in close cooperation with the team's medical officer or advisors to daily monitor the health conditions of each delegation members and report it to the OC COVID-19 Officer and FINA Medical and Doping Control Delegates. The CMC should be knowledgeable in the symptoms and transmission of SARS-CoV-2 as well as the relevant laws and preventive measures for diseases transmission. The CMC must be the part of the Delegation.

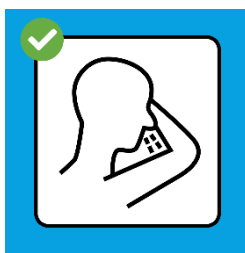
6. GENERAL RULES TO BE STRICTLY FOLLOWED BY ALL PARTICIPANTS AT THE COMPETITION

6.1 Hygiene Measures

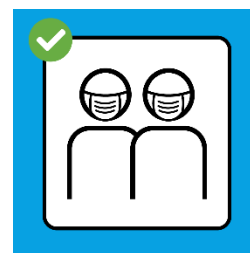
Every accredited person must follow basic principles shown below. These are valid for travel to competition, at the hotel, and at the training/competition venue.



Wash your hands thoroughly



Cough and sneeze into a tissue
or the crook of your arm



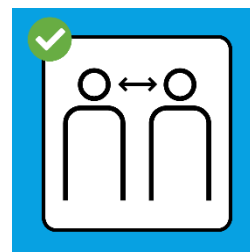
Wear a mask



Avoid shaking hands,
hugging, kissing



Stay at home if you have
symptoms



Keep your 1.5m distance

Please note:

Items/equipment/tools should NOT be shared. If this cannot be avoided, the user must disinfect his/her hands and the specific item before and after use.

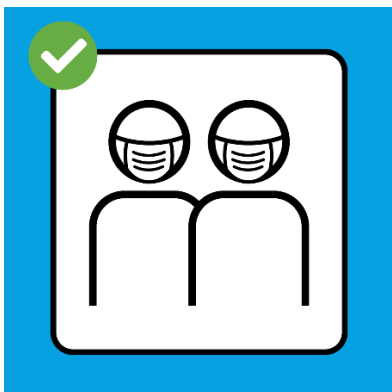
Trained cleaning staff must regularly disinfect door handles, keyboards, phones and hard surfaces, including tables, working places, sinks, toilets. The waste management and cleaning plan should be included in the competition Health Plan for FINA review.

Paper towels and liquid soaps must be provided in all bathrooms to replace hand soap bars and ventilation hand-dryers.

Organizers must provide sufficient hand sanitizers (hand-gel or similar based solutions as per WHO requirements) at all official venues, transportation hubs, and official hotels, Offices and rooms in all official locations must be well ventilated. Air conditioning units may require special filters. Details are to be included in the competition Health Plan for FINA review.

Athletes must use personal water bottles, refilled from no-touch water-outlets. Water bottles must not be shared.

6.2 Masks / Face-Nose Protection



Every accredited person **MUST** wear a mask / mouth-face nose protection at all times in official event locations including:

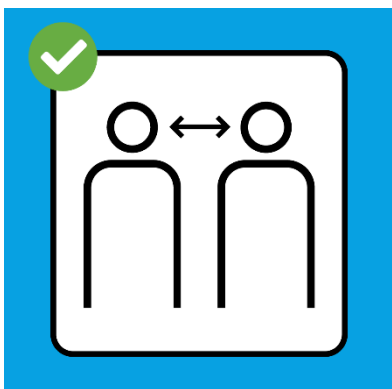
- Main Venue
- On official transportation
- At official hotels except when eating.

General exceptions to wearing a mask / mouth-face nose protection are outlined in sport-specific appendices.

When not worn the mask must be kept in a separate container/bag (e.g. sandwich “Ziploc” bag) to prevent contamination. Disposable masks must be regularly changed and multi-use masks washed after regular use.

If necessary Organizing Committee will provide a disposable mask (free of charge) to each accredited person (i.e 2 masks / day)

6.3 Physical Distancing



The physical distance of **1.5 meter minimum** must be respected at all times (except when training and during competition).

Signage to indicate safe physical distancing at points of entry should be installed, as well as plexiglass barriers and or floor markings to show flow of traffic to respect physical distancing.

6.4 Social Events

Until further notice, all social events are excluded from FINA Competitions.

6.5 Sanitary / Disinfection Team

The OC, under the supervision of the OC COVID-19 Officer, shall establish a team to implement a cleaning and disinfection plan. This team will report to the OC COVID-19 Officer via a daily briefing session. Details of the cleaning plan shall be included for review by FINA in the OC Competition Health Plan

The cleaning plan must include the following areas:

- “High touch” areas (to be cleaned frequently throughout the day)
- General-use facility areas (cleaned twice a day).
- Individual working or sitting areas (cleaned before and after each individual use)

6.6 Competition Information Package for COVID-19

The OC must provide an overarching information package covering all anti-COVID-19 measures for the Competition together with contact details of the OC COVID-19 Officer.

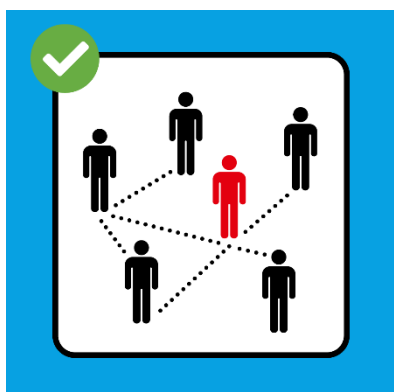
This information should include details of delegation arrivals and departures, venue entry points, arrangements for training, field-of-play restrictions and an action plan to be followed in the event of a positive case during the event.

Emphasis must be made that the OC COVID-19 Officer is the focal point for all COVID-related matters for team delegations and those with FINA accreditation. All referrals for medical advice, testing and management of symptomatic individuals can only be made through the OC COVID-19 Officer.

This information package must be distributed, prior to their arrival, to all participating delegations, officials and media representatives.

All volunteers, guests, service providers, spectators, sponsors, etc. must also be made aware of strict protocols governing the event.

There must be clear indication that any person failing to comply with Competition safety measures such as physical distancing and the wearing of masks (where indicated) will be removed from the competition venue and subject to the sanctions described in Section 20.



If a "Tracing-App" is available within the host country, Competition participants must be informed how to access and download the App and offered help in case of need. This information must also be included in the general information package

7. TESTING DURING THE COMPETITION

7.1 Testing

As mentioned before, a negative PCR (no older than 5 days) and a negative Antigen test upon arrival at the hotel are required to be accredited and to participate in the FINA Competition.

During the Competition, regular antigens tests will be required. Depending on the duration of the Competition, the following scenarios will apply:

For competitions lasting 7 days or more, 1 antigen test on day 7, and then another one after 12 days will be required for all participants.

7.2 Management of positive tests during competition

If a test is recorded as positive, it must immediately be reported to the OC COVID-19 Officer, who shall inform the FINA Medical and Doping Control Delegate. All immediate contacts of this person must be placed in isolation and investigated by local health authorities. Formal contact tracing by the local public health authorities is required.

7.3 Development of symptoms during the competition

Signs and symptoms that may indicate COVID-19 infection include high fever, dry cough, fatigue, breathlessness, or loss of sense of taste and/or smell. Any participant at a FINA competition who develops one or more of these symptoms must immediately quarantine themselves at their hotel and contact the OC COVID-19 Officer whose details appear in the Competition Information Package. Until cleared by the OC COVID-19 Officer, a symptomatic individual must remain isolated from the delegation and not attend the venue. Any decision regarding contact tracing will be made by the OC COVID-19 Officer and confirmed with the FINA Medical and Anti-doping Delegate for the competition.

In this situation, a negative test (antigen or PCR also depending on the local regulations) will be mandatory before the participant is released from isolation by the OC COVID-19 Officer in collaboration with the FINA Medical and Doping Control Delegate.

7.4 Positive Report Protocol

If an Event Participant experiences COVID-19 symptoms, or feels otherwise ill with related symptoms, he / she must immediately inform their Team Leader, or the supervisor of the respective service provider (media, volunteers, etc). The elected person of authority must immediately inform the OC COVID-19 Officer or the FINA Medical and Anti-Doping Delegate. The subsequent testing protocol will then be the responsibility of the OC COVID-19 Officer in accordance with protocols set by the local health authority.

The following scenario will guide all decisions regarding a suspected COVID-19-positive case during the event.

- If a member of any delegation returns a positive test, it is the responsibility of the OC COVID-19 OFFICER to notify the local public health authority.

- The FINA Medical and Anti-doping Delegate for the event will then be notified,
- The infected person will be isolated in quarantine
- Contact tracing will immediately commence
- All contacts will be isolated and tested as soon as possible.
- In the case of a positive result in an individual without any or with mild symptoms, they will be quarantined in their hotel room (or otherwise as indicated by the local authorities) with all meals delivered and their condition monitored.
- In the case of a positive test with accompanying severe symptoms, the individual should be admitted to hospital care under the direction of the OC COVID-19 Officer.
- From this point the management protocol of the hospital medical staff will be respected.
- Hospital discharge will be at the discretion of the attending medical staff who will inform the OC COVID-19 Officer.
- Any decision for return to the Competition will be made by the OC COVID-19 Officer after consultation with the FINA Medical and Anti-doping Delegate, the athlete and the delegation official Manager.

7.5 Consequences of a positive test and COVID-19 Diagnosis

Please refer to the section 21 Annex A Consequences.

7.6 Liability for costs related to COVID-19

1. FINA's Travel & Accident Insurance policy covers the participants of National Federations representatives and FINA Family attending any FINA event(s), from the moment they leave their home country until they return back. This coverage is provided by TSM/AXA insurance company since 2013.
2. Because the insurance policy is excluding pandemics, the COVID-19 is not covered at this time. TSM/AXA organizes and pays, on a secondary base the emergency fees until the COVID-19 is diagnosed. FINA together with the insurance broker are working to find a solution as soon as possible, in order to include this cover for the FINA event(s) participants.
3. The costs related to COVID-19 infection should be covered as follows:
 - a) PCR test before the boarding for all members of the delegation (including the referee with the team) should be covered by the participating National Federation. This is also related to the Host Federation's team
 - b) PCR test for all OC members (including desk officials and ball boys and venue maintainer operation) should be covered by the Host Federation
 - c) PCR test for the appointed FINA Officials (Technical Officials, Representatives, Delegates, Staff,) should be covered by the Host Federation
 - d) PCR test of TV production crew and service production crews should be covered by the Host Federation/OC
 - e) Antigen testing procedure upon arrival and in the middle of the Event for all Participant delegations should be covered by the Host Federation
 - f) Cost of Isolation after having a positive Antigen test upon arrival and/or in the middle of the Event of any member of the delegations should be covered by the respective federation
 - g) Cost of PCR test after positive Antigen test should be covered by the respective federation



- h) Cost of the quarantine or medical care if occurs in case of a positive test in any member of the delegation must be covered by the respective federation. Cost of earlier travel or delayed travel should be covered by the respective federation
- i) Cost of the quarantine or medical care if occurs in case of a positive test in any member of the FINA Officials must be covered by Host federation /OC. Cost of earlier travel or delayed travel should be covered by Host Federation/OC
- j) Regular Medical Service (detailed in the Event Guide) connected to the Event and the cost of the OC COVID-19 Officer should be covered by the Host Federation. The medical hotline must be established by the Host Federation.



8. OFFICIAL TRANSPORTATION

8.1 At the Airport

The OC must facilitate the arrival and transfer of the visiting Team Delegations, accredited FINA Officials and Media.

For airports with border controls, a dedicated lane should be available to any accredited person attending the FINA Competition. This should also include direct collection in private buses avoiding public spaces where possible.

All Team Delegations must comply with any SARS-CoV-2-RNA (antigen testing) testing at the airport that may be required by relevant local authorities and/or in the hotel by the OC as per the FINA COVID-19 Guidelines.

When possible, the return flight should take place immediately after the competition.

8.2 Local Transportation

Buses must be thoroughly cleaned prior to collecting team delegations and officials. For large team/delegation (>20 athletes), each team/delegation will have its own bus for the match for the entire duration of the Event.

The bus driver should be equipped with appropriate face protection i.e. covering of the mouth and nose) and gloves and always remain at least 1.5m from athletes (e.g. middle door to be used by athletes and staff to enter/leave the bus). Driving area can be isolated from the rest of the bus as in public transport now.

The OC remains responsible for providing transport for the accredited FINA Delegates and Officials. All designated drivers should wear face masks.

With respect to all transportation:

- Every Person must wear a mask (as indicated in Information Package).
- An empty seat should be kept between persons (unless they are members of the same playing or training squad).
- All transport access restrictions must apply at every Competition Shuttle stop.
- Hand sanitizer should be provided at bus entrance/exit.

8.3 Luggage

Each person will be responsible for the handling of their personal luggage at airport pick-up, the bus, and at the hotel.

8.4 Airport Departure

When possible, a dedicated security lane should be proposed to accredited participants at the airport. Considering the last-minutes potential cancellations of flight due to COVID-19, OC shall be prepared to offer accommodation (or assist in finding accommodation) to athletes, teams, FINA Family, International Media.



9. ACCOMMODATION / HOTEL

Ideally the official hotel(s) should be exclusively for visiting team delegations and FINA officials. If this is not possible, accredited participants should have access to a designated entrance, dedicated floors, dedicated dining area, meeting rooms, and elevators when possible.

The OC COVID-19 Officer must contact the hotel in advance to ensure that all arrangements are in place and that the hotel understands what is required.

Hand sanitizers should be provided on the dedicated floor and in common spaces (dining room, meeting room).

Disposable masks shall be given to all accredited persons for the duration of the competition (e.g. 2 masks/day). The OC will provide these masks free of charge for the participants.

The policy on sharing hotel rooms will follow the existing FINA principles, but is ultimately the responsibility of the respective Team and Organizer.

9.1 Hotel Check-in / Check out

To minimize hotel lobby congestion hotels should consider the following strategies:

- implement express check-in/check-out procedures,
- stagger arrivals and accept only one team delegation at a time.
- ensure that rooms are available immediately upon arrival of the athletes.

9.2 Rooms

In advance, it is recommended that the OC secures complete hotel floors for athletes and officials and restricting access to non-FINA hotel guests.

Rooms should be well ventilated and cleaned daily in accordance with anti- COVID-19 cleaning protocols.

There should be adequate supplies of hand sanitizers, soap and towels and no housekeeping while the athletes are occupying the room. The collection and handling of all used towels and bed linen should be in accordance with anti- COVID-19 cleaning protocol strict measures.

9.3 Amenities

Access to spa area, fitness rooms, and other common spaces should be prohibited for athletes and staff, unless exclusivity can be arranged.

Video meeting room in the hotel can be provided if the delegations can use it with exclusivity during the whole time of the competition. The room must be cleaned after each session.



9.4 Dining Area / Restaurant

The Official Dining Room must have an access control to check meal vouchers and limited guest access to ensure physical distancing. An option could be for hotel staff to seat guests and thereby control numbers.

Ideally, team delegations should have separate, dedicated dining areas to avoid any mixing with general public. Designated dining schedules and separate areas for athletes, coaches and officials offer another alternative.

These general matters should be pre-planned with the assistance of the OC-appointed COVID-19 representative. Details should be included in the OC Event Health Plan, and are subject to approval by FINA.

In the dining room itself the following rules should be respected:

- Contact with hotel staff in the dining area should be minimized
- There should be no self-service buffet meals – hotel staff to serve all meals.
- Drinks should be served at the table or by staff at a drink station
- Hotel staff should distribute all cutlery and plates
- Chairs at tables must ensure physical distancing is maintained
- Team designated tables must be used and respected by all delegations
- Face masks should be worn when entering and leaving the dining room
- No face masks are to be placed on tables
- Time spent in the dining room should be kept to a minimum
- Tables will be cleaned by hotel staff immediately after they are vacated
- Delegations should only use the toilets in their room and when flushing, ensure that the toilet cover is closed.

9.5. Staff

As a minimum rule, hotel staff should wear face masks and regularly disinfect hands; there should be no access to any area of the hotel for anyone showing symptoms of infection.

9.6 Other activities

No delegation member should leave the hotel unless previously arranged with the OC COVID-19 Officer and only under circumstances that do not involve contact with anyone outside their group.

Sightseeing will not be permitted.

9.7 Isolation Rooms

The OC must ensure the availability of at least two rooms for urgent isolation requirements.



10. ACCREDITATION

Every person prior to receiving accreditation MUST proceed through a Medical Checkpoint. The OC must arrange a separate seated waiting area prior to the Accreditation Room for the Medical Checkpoint. This area must respect space requirements for physical distancing.

Accreditation will be issued only to those persons who have completed the health questionnaire, at the time of accreditation have NO signs or symptoms of COVID-19 infection and have complied with the requirements set out at Section 4.1.

In the event of any medical concern the OC COVID-19 Officer and FINA Medical & Doping Control Delegate will confer. If there is confirmation of possible COVID-19 infection the individual will be brought to the Isolation Room for the next steps advised by public health authorities.

For each new or additional accreditation, the FINA OFFICE shall be contacted for authorization.



11. AT THE VENUE

Equipment owned by the facility shall be maintained, sanitized and disinfected by the facility owner/personnel.

In particular the OC must ensure that the venue provides the following:

- Signage indicating physical distancing recommendations on self-protection, hand washing and coughing etiquette, posted in the venue entrance and throughout the facility.
- Venue entrance and exit doors and pedestrian flow into and throughout the facility, clearly indicated where necessary with floor markings to show physical distancing requirements.
- All official accredited zones (athletes' area, media, working spaces, field of play), must accommodate physical distancing requirements and provide masks, disinfecting wipes and alcohol-based hand sanitizers .
- All confined spaces should have adequate fresh air ventilation.
- A venue medical facility should be provided to accommodate routine medical services, offering secure, confidential assessment of athletes and officials. In the unlikely event of an athlete or official suddenly presenting with symptoms suggestive of COVID-19 infection, this medical facility could double as an isolation room.

Personnel from the same team delegation are permitted to sit together and spectator seating for athletes, officials and other accredited FINA personnel should conform with standards for physical distancing.

The presence of public spectators will be mutually agreed by the OC and FINA and in accordance with the prevailing standards set by the local health authority.

Bins and/or containers must be available in numerous venue locations for all disposables.

11.1 Zoning

A concept of zoning is recommended to reduce the interaction between the different participants to a competition. The Venue shall be divided in 5 zones (see figure hereafter). The zones must be clearly separated and, where in the same stand, should have a minimum of three rows between them.

Zoning access must be clearly identified on individual accreditation and access must be enforced. Some essential workers (e.g. medical or anti-doping) may require "all zone" access. These decisions should be agreed in advance by the OC, Competition Manager, the OC COVID-19 Officer and the FINA Medical & Doping Control Delegate

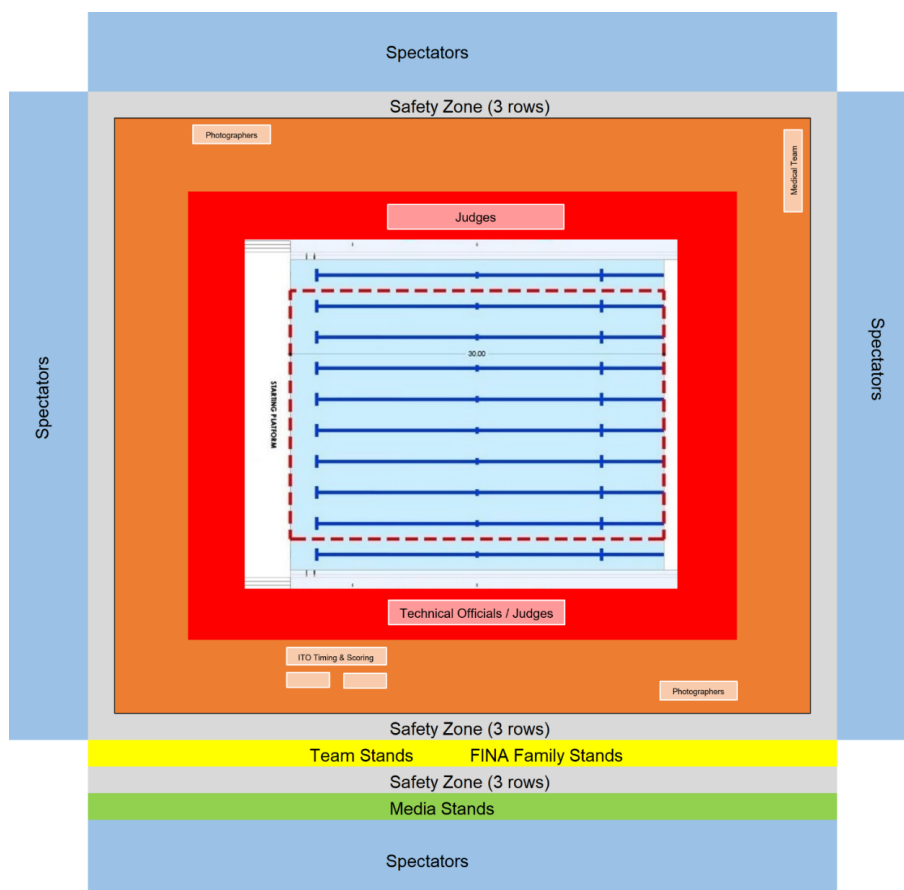
A complete accreditation list of all personnel directly involved in the competition and their zone access must be established in accordance with the above process.

Zoning colour (red/orange/yellow/green/blue) must be clearly marked at the venue with sufficient staff available to enforce the policy.

Separate, clearly identified toilets should also be allocated in each zone.

Zone	Area	Group
Red	Competition pool, Training Pool, changing rooms and treatment rooms, Doping Control Station, Medical Room, Toilets and FOP Access	Athletes and supporting personnel Sport Officials (Judges, referees, etc.) FINA Representatives Doping Control Staff Competition Manager Lifeguards
Orange	Selected area on the FOP	Photographers TV Production/Cameras Limited staff of Timing/Scoring Medical Services COVID-19 Officer Security
Yellow	Stands, OC and FINA Family Offices, Timing/Scoring Office	Venue's speaker/announcer Teams delegations TV Production Fire Service Police/Security
Green	Stands	Media Media Manager Floor Manager
Blue	Stands	Spectators (if allowed) Security / Marshals

11.2 Venue Map





11.3 Swimmers and delegations Arrival

Access to the pool should be via dedicated 'zone' entrances (red, orange, yellow, green), no mixing is allowed.

Swimming and officials (red zone) should be dropped immediately by their entrance. If any walking is necessary, there should be clear segregation of the swimmers/officials, and no mixing with anyone else.

A fixed time of arrival to the event should be scheduled to prevent crowding of athletes at the entrance.

11.4 Body Temperature Check at Competition Venue

The OC must provide individual temperature checks at all venue entry points using non-contact thermometers as a screen for all accredited personnel.

Where an accredited person is found to have an elevated temperature (**above 38.0°C**), provision must be made for completion of an on-line symptom screening. Qualified personnel must be on hand to interpret individual results and determine whether the individual is permitted entry into the venue. The OC is recommended to have 3-4 suitable stations at the entrance for this function. If there is no other explanation for the increased temperature the person involved should be quarantined and a COVID-19 test must be done. The OC COVID-19 Officer shall determine the appropriate next steps in this case.

11.5 Changing Rooms

Depending on the size of the venues, if feasible, allocate a changing room for each team.

Teams and Technical Officials should be allocated changing rooms that are large enough to allow for sufficient space between seats to ensure physical distancing is respected.

Teams and Technical Officials should be allocated their own toilets, which are restricted from individuals in other zones.

Teams should be allocated separate treatment rooms when possible.

Venue staff should ensure that the changing rooms, treatment rooms and toilets are thoroughly cleaned and disinfected before the pool is open to anyone else; and at regular intervals throughout the day depending on the utilization schedule.

Once cleaned, no one outside of the teams/officials should enter the changing rooms for the duration of the entire event. It is recommended to do a deep clean overnight and/or if breaks in utilization during the day.

To further reduce the risk of infection, at the end of the competition it is recommended that the athletes and officials do not shower at the venue but return to their hotel or homes as quickly as possible to shower there.

Access from the teams and referee rooms onto the pool area will be within the red zone and supervised accordingly.



11.6 Warming Pool / Preparations Area

All the swimmers/teams shall respect the physical distancing with the other swimmers/federations/clubs.

In the warming pool, dedicated areas for each team (or a limited number of swimmers from the same federation) shall be created. This may request a well-organized turn over based on the competition appearance.

It is recommended to allocate one space for each federation or group of swimmers. This must be done by the LOC based on the registration, and not by the swimmer/federations themselves.

If a delegation has a massage table, it must be used only by their swimmers and not any swimmer outside of this delegation. It must be cleaned after each massage.

11.7 Athletes' Lounge (if applicable)

Physical distancing shall be respected in the lounge.

It is advised not to have furniture (seats/tables) in the lounge to avoid having guests staying in the room for too long.

Use of masks is mandatory in the lounge.

For any food service, lunch packets or “grab and go” food is mandatory. If a buffet is proposed, an OC Staff Member shall serve the food as no self-service will be allowed.

Personnel to hand out cutlery and dishes if needed.

The time spent in the Lounge must be kept to a minimum.

11.8 Function Rooms

All Function Rooms shall be large enough to maintain physical distancing.

- Hand sanitizer or sink with liquid soap and paper towels must be available in every room.
- Tables and chairs shall be placed in a way to guarantee physical distancing between work spaces.
- Catering (if any): The OC shall provide individual drinks and snack boxes for each official, depending on the duration of the Competition. Meal details and timings shall be discussed with the FINA Delegates on site. Officials shall be advised to provide their own water bottle/thermos.

11.9 Medical Station

The Medical Station and First Aid Room will follow the principles set in the present FINA COVID-19 Guidelines.

This protocol must comply with the local Public Health Authority regulations.

11.10 Doping Control Station

The Doping Control Station Room will follow the principles set in the present FINA COVID-19 Guidelines.

The doping control procedures will be defined by the FINA DCRB in compliance with WADA COVID-19 Guidelines.

All doping control officers, and volunteers must respect all anti-COVID-19 precautions and wear masks and gloves.

11.11 Media, Press Centre and Press Conference Room

Media accreditation shall be prepared in advance.

- ✓ The media representatives must complete the same health screening process as other accredited groups.
- ✓ Masks/mouth-nose face protection must always be worn in the Press Centre, Press Conference Room, Photo Positions and Mixed Zone.
- ✓ Accredited media representatives must be limited in numbers, taking into account physical distancing and the available space.
- ✓ The Media/Press Centre and Press Conference Room must be prepared with at least 1.5 meters between the seats and neighboring rows of seats.

No Press Conference should be organized in principle. But if a Press Conference is organized then the following rules shall be applied:

- A maximum number of participants must be limited by the size of the Press Conference space, under the guidance of the OC COVID-19 Officer. A maximum of 2 representatives will be seated at the head table respecting the regulations of physical distancing.
- No drinks or snacks will be provided for speakers.
- No microphones will be provided for media representatives
- Each athlete should have his/her own microphone
- The first line of media should be at least 4 m distant from the head table, whilst the allocation of the seats for the media should respect the rules of physical distancing.
- The table, the chairs and the microphones should be disinfected after the first team representatives leave the room.

11.12 Mixed Zone

A clear delineation must be drawn on the floor between the backdrop and press barrier, so that athletes always stay at least 1.5 meters away from media representatives. Different microphones must be used, one for the journalist and one for the athlete. The Athlete's microphone shall be cleaned and sanitized after each interview.

The same principle must apply to one-on-one interviews.



Clear signage indicating the obligation to wear mask/mouth-nose face protection must be placed at the entrance of the Mixed Zone.

This area should be supervised by the FINA Press Delegate who is familiar with the FINA COVID-19 Guidelines, to ensure that all procedures are respected.

11.13 Field of Play (FOP)

The field of play is the whole area surrounding the swimming pools.

Waiting areas must be clearly identified with signage and floor markings near entrances to the FOP.

Supplemental field of play accreditation may be used to limit the number of persons having access to the field of play area.

Specific areas are explained in Sport Specific Annex.

11.14 Training

Physical distancing between athletes and training groups shall be organized and respected.

Physical distancing between athletes shall be respected during warm-up / training as feasible.

Coaches shall wear face masks and respect physical distancing with other people when in the same area.

For specific training rooms and if applicable, the maximum number of persons allowed at the same time shall respect the local rules (based on the size of the room) and physical distancing of at least 1.5 meters shall apply.



12 SPECIFIC PROCEDURES AND PROTOCOLS AT ARTISTIC SWIMMING COMPETITIONS

Coaching and non-coaching staff: must use mask or facial covering at all times while in the facility.

Judges must also use facial covering (mask, shield, both) at all times. If someone does not feel that they can judge with a facial covering, they should not accept the contract. Inform the assigner so a replacement can be found.

Athletes are also required to wear masks in the venue. Once arriving at their initial physically-distanced allocation the athlete can then remove the mask or facial coverings, place it into a paper bag, and keep it isolated with their personal items throughout the competition. The mask or facial coverings should be worn while using other areas of the facility (i.e. bathrooms), and while exiting the facility after competition.

12.1 Competition Format Considerations

Consider reducing the number of athletes per training session to ensure physical distancing. Schedule longer breaks between sessions to allow for cleaning and staggered entry and exit of individuals.

When possible, keep athletes from each federation in the same bubble.

Rotate everyone together and in one direction. Wipe down judges' and referee chairs and tables between sessions.

Allow for additional time during competition and warm-up rotations for disinfecting/cleaning/sanitizing.

Consider allowing modified meet formats to conform to physical distancing guidelines.

Consider holding the awards ceremony in an open and separate area from competition.

Consider splitting awards ceremonies into several smaller ones, or have a table designated for award pickup and with a backdrop for photo opportunities.

12.2 Call Room

Protocol before entering the competition area for the performance needs to be adjusted to respect all the COVID-19 procedures.

Masks will be worn in last call room and taken off just before team leaves last call room.

Recommend guidelines for entry and exit of last call room so there is no overlap of teams.

One team in the last call room at a time. Teams should be provided a disunited waiting area and volunteers will come and escort the team to the last call room. The last call room will be cleaned between each team. Baskets for athletes' apparel will be sanitized between each use.



12.3. Coaches/Athlete Check-in Management

All coaches' meetings should be held virtually. If not possible, physical distance of 1.5m during the group coach meeting, require masks be worn, and keep the meeting as brief as possible.

Communicate any pertinent information to coaches prior to the event via email or via white board messaging at arrival.

Stagger federation/check in so that all participants are not checking in at once. Consider assigning check in times to each federation.

12.4. Judges Considerations

Provide separate/more tables to maintain physical distancing of 1.5m between each judge.

Limit volunteers/staff that may customarily sit at judge's table.

Provide cleaning supplies for frequent cleaning of electronic scoring devices, such as iPads.

Provide a one-page list of competition order to each judge to reduce the need to pass multiple papers from person to person.

Consider using Plexiglas partition between/in front of officials for two judge panels if space within a facility layout makes physical distancing challenging.

Provide judges hospitality area that provides physical distancing and grab and go options. Consider avoiding buffet-style meals for hospitality and instead provide individually boxed meals with utensils. (agree but only in this document)

Consider eliminating judges' meetings and report straight to judging positions or report in via technology.

Pre-event judges' meetings can be hosted via video conference. Judges' debrief meetings will also be held via videoconference.

Coach & Judge debrief will be hosted towards the end of the event.

It is recommended that Judges start the event in their seats.

Consult with the Meet Referee if a judge becomes ill during a meet to discuss the process to inform the judge that she/he needs to leave the meet or move to an isolation area. The OC COVID-19 officer should be informed and involved. The TASC is responsible for identifying replacement options and should notify the Referee.

12.5. Volunteers Considerations

Evaluate the needs of volunteers and reduce the number whenever possible.

Be mindful of the need to create physical distancing for volunteers.

Provide masks/hand sanitizer to all volunteers.

Be prepared for individuals to be less willing to volunteer due to safety concerns.

12.6. Special Considerations for Artistic Swimming

Each federation will be responsible for their team's own supplies, including bringing and maintaining their personal swim bags, water bottles, hand sanitizer, yoga mats etc.

Teams should be made aware of the COVID-19 protocols and their role in maintaining safety guidelines for themselves and others prior to arriving at the meet.

Each athlete is responsible of her/his materials and shall not share with other teammates or other athletes.

12.7 Other Considerations

Eliminate athlete check-in altogether. Have athletes check in with their coaches and have one coach per federation communicate scratches, to chief referee.

Consider delaying the report time for judges:

- ➔ If you will not have a judge's meeting,
- ➔ If the first-session stretch/warm-up period is being extended to allow for social distancing.
- ➔ Encourage eating off site for athletes and judges. If food is provided at the venue no buffet, only lunch boxes for each athlete /judge.

13. MEETINGS

13.1 Team Leaders' Meeting

It is recommended that the Team Leaders' Meeting is held virtually.

If the meeting is not done virtually, only one (1) Team Leader (or assistant) per participating FINA Member Federation shall attend this meeting.

The room must be prepared to allow at least 1.5 meters between the seats and rows of seats.

In addition to the Venue/ Competition Agenda, the FINA COVID-19 Guidelines and details shall be illustrated by the OC COVID-19 Officer and FINA Medical & Doping Control Delegate, if present

Masks / Mouth-Nose Coverings are mandatory for all attendees.

13.2 Medical Meeting

It is recommended that the Medical Meeting be held virtually. if the meeting is not done virtually, only one (1) person per participating FINA Member Federation shall attend this meeting

The room must be prepared with at least 1.5 meters between the seats and rows of seats. In addition to the Medical Agenda, the FINA COVID-19 Guidelines and details shall be illustrated by the OC COVID Officer and an FINA Medical & DC Delegate , if present.

13.3 Event-Related Meetings

If catering is provided in the meeting room: NO self-service is allowed. Before the meeting, a water bottle shall be placed at each seat. If snacks are provided, they have to be offered in individual snack boxes.

13.4 Non-Event-Related Meetings

To minimize the number of accredited personnel it is recommended that no non-event-related meetings will be held at a FINA Competition.



14. CEREMONIES

14.1 Opening/Closing Ceremonies

Limited Opening and Closing ceremonies can be held if all infection control requirements and procedures are respected.

Such options must be agreed upon between the hosting FINA OC Member and the FINA Office on a case by case basis.

14.2 Presentations of competitors or Artistic swimming Teams

Individual presentation can be done.

Presentations of teams should be done from the water

14.3 Award Ceremony

Award ceremonies shall respect the physical distancing of 1.5 meters.

Athletes must wear a mask.

No hand shaking or hugs are permitted between the medalists and award presenters.

Medals are presented on a plate by the FINA Representative or another delegate. The athlete must put the medal around his/her neck by himself/herself.

Flower presentations are not recommended.

A reduced number of people shall participate in Award Ceremonies.

Athletes shall stay on their individual podium platform until the ceremony is over.

All arrangements for award ceremonies and podium set-up must be discussed and approved by the FINA Delegates. The FINA Medical & Doping Control Delegate along with the host OC COVID-19 Officer should approve the ceremonies from a health and safety perspective.



15. SPECTATORS

The decision on whether or not to allow spectators to attend competitions is up to the Host Federation, upon consultation with the host local health authority. The Host Federation will be responsible for ensuring all health and safety regulations are met for spectators. If spectators are allowed, a distinct prevention protocol for the visitor area must be provided and enforced by the organizers.

Similarly, the decision on whether or not to open retail and refreshment shops at the Venue rests with the host federation and should be guided by local health regulations.

From the perspective of FINA, the following guidelines should be followed:

- The number of spectators attending should be within the limits set by any local government regulations and communicated to FINA.
- Staff working in the spectator area (green zone) should wear face masks, which are changed at regular intervals, as per local health & safety regulations.
- Staff working in the green zone should not mix with anyone working in the other zones.
- All spectators should have their temperature taken at the entrance using a touchless forehead thermometer (anyone with a temperature higher than 38.0°C cannot enter).
- Spectators should be made aware of the COVID-19 restrictions at the competitions and any other requirements.
- Where available, spectators are encouraged to install the COVID-19 detection App on their mobile devices.
- Spectators must stay within the green zone.
- Spectator seating should allow for physical distancing, as per local country regulations.
- Retail/refreshment shops should follow physical distancing measures.
- Steps should be taken to ensure physical distancing for all queues at the venue entrance or in the retail area, in line with local country regulations.
- Enforcement of the above regulations applicable to all spectators remains the responsibility of the OC.

15.1 Ticket Sales

Consider online ticket sales.



16. VOLUNTEERS

Volunteers must undergo the same medical screening and accreditation procedure as Teams, Officials and Media . The OC shall arrange a separate distribution for the volunteers' accreditation cards and shall not use the official accreditation station during the main arrival days for Competition participants. The required documents (e.g. medical health questionnaire, waiver, etc.) must be completed by each volunteer.

At the venue, volunteers must always wear a mask / face-nose protection and must be briefed on all hygienic measures by the OC.

All volunteers who come into direct contact with athletes or officials must undergo the same COVID-19 testing before the event. Their resulting status must be checked by the OC COVID-19 Officer.

17. POLICY FOR REPORTING CASES AND ACTION PLAN IN CASE OF PARTICIPANT'S ILLNESS

This item is covered in Section 7.3 and 7.4.

However in general principle the OC must define an action plan in collaboration with the local public health authority for submission to FINA prior to the competition. This information must be included in the Competition Information Package referred to in Section 6.6.

The OC COVID-19 Officer must have direct contact with public health authorities to facilitate access to medical care and testing as required.

Where a specific Team Delegation has ONE confirmed positive COVID case in an accredited athlete or official, that delegation is permitted to continue in the Competition. The infected individual will be isolated and managed in accordance with local health regulations.

However if there is more than one confirmed positive COVID-19 case with any single delegation it may be assumed that there has been transmission of the virus and that team and any officials within the delegation must be immediately withdrawn from competition.

Subsequent contact tracing to include all members of the team delegation will be at the discretion of the OC COVID-19 Officer.

The OC and FINA will work on a common communication strategy for the situation of a positive COVID-19 case. Discretion and respect for the individual privacy must remain a priority. However the risk to remaining Competition Participants must also be taken into account.

17.1 Isolation and associated costs.

All issues relating to the responsibility for isolation, including accommodation costs, meals and changes to itinerary must be clarified in advance with the OC and informed to all participants in the Event Information Package.

17.2 After competition Survey

FINA should submit a post-competition survey to all participants to determine their health status following the competition.

It will remain the responsibility of the OC to implement a similar post-competition survey for spectators if recommended by the local health regulations.



18. COMMUNICATION TO PARTICIPANTS

It is important that these Guidelines are communicated to all accredited persons and spectators who may attend a FINA Competition. It could be communicated clearly to all participants and spectators in advance through social media, websites and through the FINA Member Federations.

It is strongly recommended that information regarding COVID-19 status in the specific area and country of the Competition is included in the Competition Information Package and distributed 14 days before the event.

At the same time it should be the responsibility of the Organizing Committee to remind all intending participants of COVID-19 health matters, well in advance of their departure for the FINA Competition location.

Delegated FINA Medical and DC Delegate of the SMC and Competition OC should be prepared to respond to any relevant questions at any time before, during and after the competition.



19. SANCTIONS

If any member of the OC or any other Participant fails to comply with any of the requirements set out in the FINA COVID-19 Guidelines, their accreditation card may be removed by the OC COVID-19 Officer, following consultation with FINA and they will be required to leave the venue immediately.

In addition, violations of these Guidelines might be subject to disciplinary proceedings and sanctions pursuant to FINA Rules.

20. REFERENCES AND LINKS

20.1 Approved Tests

You will find below more information about the FINA-Approved Tests

BIOSENSOR(SD BIOSENSOR, Inc.)

<http://sdbiosensor.com/xs/product/7672>

Contact

Europe / Africa

Asia

America

E-mail

covid-emea@sdbiosensor.com

covid-asia@sdbiosensor.com

covid-latam@sdbiosensor.com

ABBOTT (-PanBio COVID-19 Antigen Rapid Test)

<https://www.globalpointofcare.abbott/en/product-details/panbio-covid-19-ag-antigen-test.html>

BIOSYNEX: COVID-19 Ag BSS

<https://www.biosynex.com/en/pharmacie-para-test-covid-19/>

NG Test SARS-CoV-2 Ag

<https://www.lumiradx.com/uk-en/what-we-do/diagnostics/test-technology/antigen-test>

AAZ: - COVID-VIRO Antigen Rapid Test

<https://www.covid19aaz.com/>

BD veritor:

<https://www.bd.com/en-us/offerings/capabilities/microbiology-solutions/point-of-care-testing/bd-veritor-plus-system-for-rapid-covid-19-sars-cov-2-testing>

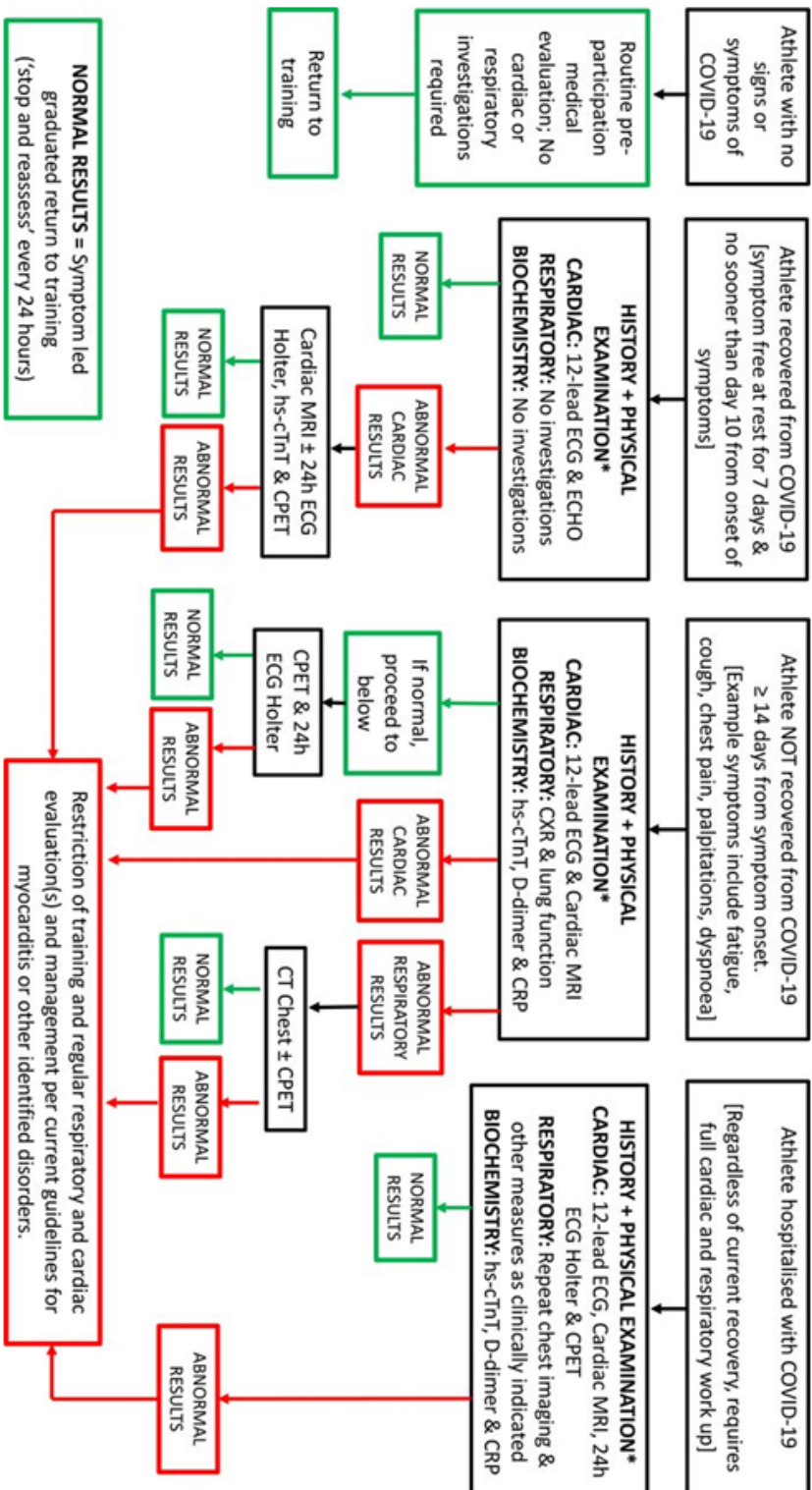
WESAIL COVID-19 Antigen

en.wesailbio.com

In Europe: jan@insightgraphics.info

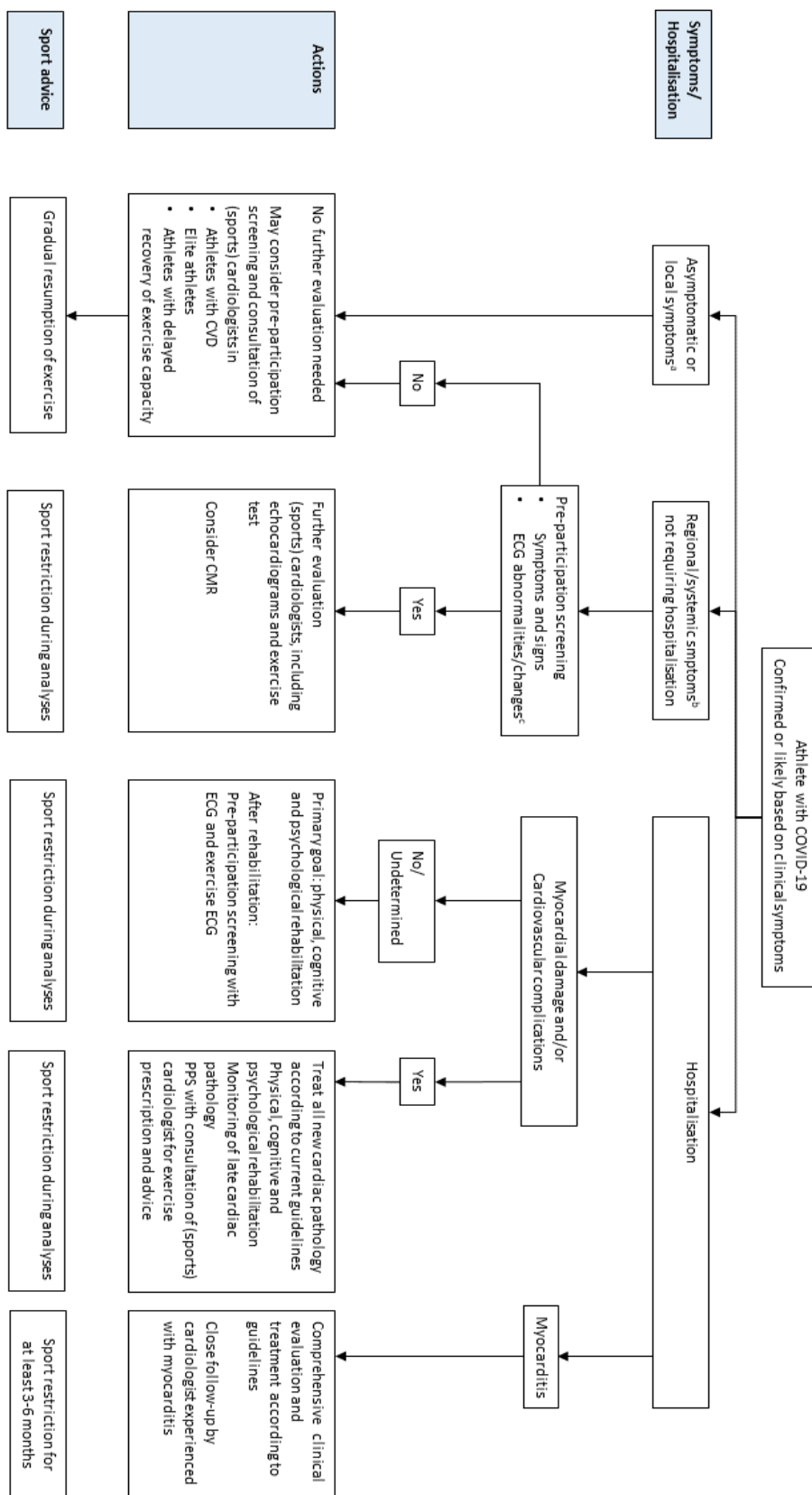
20.2 RTP pathway in those elite athletes confirmed (or suspected) COVID-19 positive.
Wilson et al *Br J Sports Med.* 2020 Oct; 54(19): 1157–1161.

RTP pathway in those elite athletes confirmed (or suspected) COVID-19 positive. *History and physical examination should also consider other organ systems where COVID-19 can have pathological consequences such as neurological, gastrointestinal and dermatological.



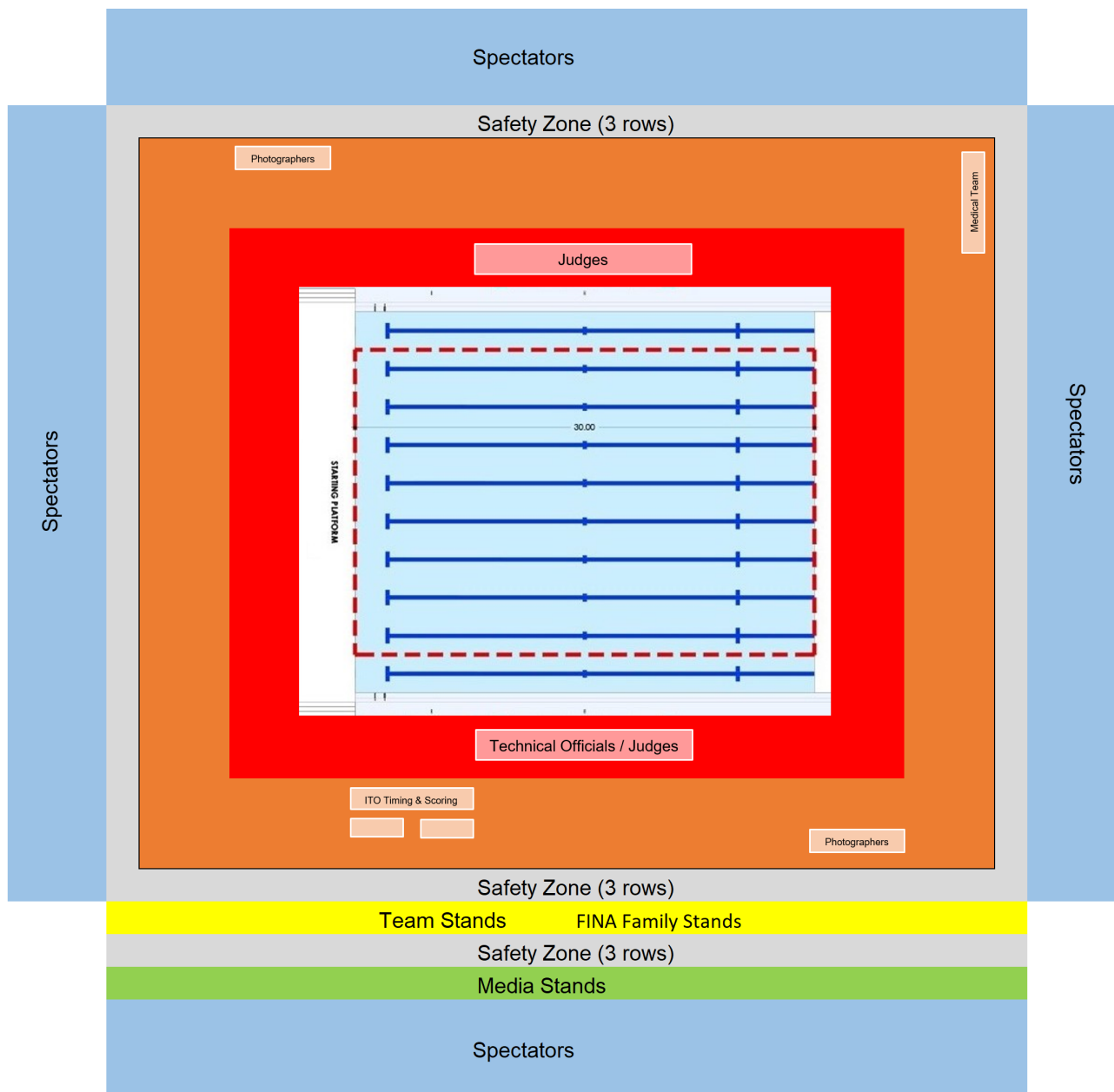
Mathew G Wilson et al. *Br J Sports Med* 2020;54:1157-1161

20.3 Flowchart for stratification of athletes after COVID-19 for pre-participation screening, diagnostic and therapeutic considerations. Verwoert et al Neth Heart J. 2020 Jul; 28(7-8): 391–395.





20.4 Zoning for Artistic Swimming



21. ANNEXE A // Consequences for athletes

All the following consequences / recommendations shall be done in agreement with the local regulations.

A swimmer is tested positive before the event, at home, during preparation.

One (1) negative test is needed (PCR) before boarding and fit for competition according to the point 4.2 of the general guidelines.

A swimmer is tested positive before the Event, at home, after registration in the GMS

Swimmer can be replaced by the federation.

A swimmer is tested positive upon arrival with Antigen Test (if used) otherwise PCR

However, the swimmer must be quarantined immediately, and tested with PCR if an antigen test was done.

A swimmer is tested positive during the competition period after an initial negative Antigen Test

The swimmer is quarantined immediately, and a PCR test shall be done.

If the PCR test is also positive, then a substitution can be done in the team by a swimmer who is negative.

If the PCR test is reported negative, no further action is required and the swimmer can leave the quarantine and is allowed to resume competing.

A swimmer is tested positive after the competition

The contact tracing shall be implemented. The whole team may be quarantined up to each federation.

Swimmers are tested positive during preparation

All swimmers from a team/delegation must enter a competition with negative tests.

Two (2) negative tests are required from each member of the team/delegation. Swimmers should be fit to return to competition (please see 4.2).

Swimmers are tested positive at home after registration in the GMS

The swimmers selected for the competition must be nominated 48 hours before boarding with two negative tests.

A swimmer or a team delegate is tested positive by antigen test upon arrival

This person must be quarantined and tested by PCR to confirm positivity.

A swimmer is tested positive during the Event

The swimmer is quarantined and PCR tested to confirm positivity and if positive the swimmer is excluded but if negative she/he can return to competition

Two (2) team/delegation member are tested positive during the Event

Two swimmers positive could mean that there is a spread and therefore the selection/team and entourage could have been contaminated.

The whole team must be tested by antigen tests and the ones who are positive need to be confirmed by PCR. If 2 persons are positive they are quarantined and the team remains in competition.

If 3 team members are tested positive the team is taken out of the competition.

More teams have positive cases upon arrival, during competition time

Please refer to the above.

A technical official has a positive case upon arrival or during the Event

Isolation and local regulation shall apply.

Team official is tested positive upon arrival or during the Event

The team official is isolated. The isolation costs shall be covered by the member federation. Replacement from the accredited staff can be done.

A Team official is tested positive upon arrival

Please see above.

More than 10% of the participants are tested positive

The competition may be cancelled/postponed. To be decided by FINA.

SUMMARY

Team = athletes and entourage

Is there a risk for the team?

1 case = Immediate isolation and PCR test should be applied

2 cases = It could mean spread and therefore the team and entourage have been contaminated. Then Antigen tests shall be conducted for the whole team

3 cases = To be removed from the competition

Officials (Referees/Judges)

The above recommendation will apply to Officials.

FINA Family (Technical Committee, Bureau Members, FINA Staff)

The above recommendation will apply to FINA Family

22. DECLARATION OF RESPONSIBILITY

Each accredited person and participant will be invited to complete and sign the following Declaration of Responsibility.

I declare,

1. *That I have full knowledge and awareness that the practice of the sport of Artistic Swimming both in trainings and in competitions implies a risk of infection of COVID-19 and which I am aware of and accept.*
2. *That I do not present symptoms of the SARS-CoV-2 Coronavirus (fever greater than or equal to 38.0 degrees, cough, general malaise, feeling of shortness of breath, loss of taste, headache, fatigue, neck pain, muscle pain, vomiting, diarrhea) or any other typical symptoms of the infections.*
3. *That I have not been tested positive or had close contact with any person(s) with possible or confirmed symptoms of COVID-19 in the last 14 days prior to the date of signing this document.*
4. *That I have read the safety protocols, the information of hygiene prevention and the safety measures of COVID-19 established by the organizer of the Event and I agree to comply with them in all manners.*
5. *That I am responsible for my behavior according to the Guidelines during the entire Event including the preparation period and the travel to the Event.*
6. *That I am aware of and accept that non-compliance with the rules of COVID-19 (especially the non-declaration of having tested positive or not having declared the fact of having had a close relationship with people with symptoms) implies a very serious infraction of the disciplinary code that can lead to a sanction of exclusion from the competition and the loss of the sports license for a period to be decided by FINA.*
7. *That I promise to inform the Organizer and the respective FINA official(s) or the delegation's COVID-19 Medical Coordinator (CMC) about any symptoms that are compatible with COVID-19 or about the fact of having tested positive or the existence of any presumed or confirmed case of COVID-19 in the family or close environment and I promise to keep the CMC promptly informed about their evolution. This information will be treated confidentially and for the sole purpose of being able to adopt the necessary measures to prevent the contagion and spread of the virus.*
8. *That I am aware of and accept that the organizer of the Event has registered all the participants in order to be able to have traceability in case of a positive test result or positive symptoms among any of the participants or team(s) who have had close contact close during the Event.
By completing this document, the signature grants the consent for FINA/Organizer to process with all data only with strict medical and preventive point of view.*

At the same time, and by signing this document, I declare to know the specific protection and hygiene measures established in the Protocol of the Event.

To be in compliance with the aforementioned rules is an individual responsibility of each of the participants and of the Federation or entity that organizes the Event, without there being any responsibility on the part of FINA in case of infection(s) that occurs in relation with the Event.

If any member of the OC or any other Participant fails to comply with any of the requirements set out in the FINA COVID-19 Guidelines, their accreditation card may be removed by the OC COVID-19 Officer, following consultation with FINA and they will be required to leave the venue immediately.

In addition, violations of these Guidelines might be subject to disciplinary proceedings and sanctions pursuant to FINA Rules



FÉDÉRATION
INTERNATIONALE
DE NATATION

Ch. de Bellevue 24a / 24b – 1005 Lausanne, Switzerland

Tel: +41 21 310 47 10

Fax: +41 21 312 66 10

Email: artisticsswimming@fina.org

www.fina.org